



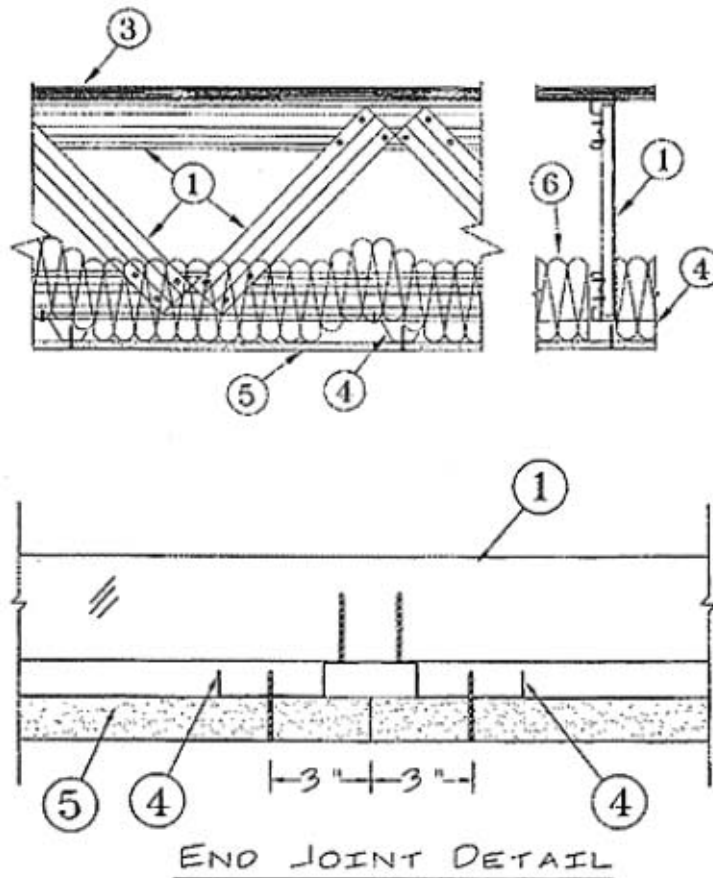
Northbrook, Illinois (847) 272-8800  
Melville, New York (631) 271-6200  
Santa Clara, California (408) 985-2400  
Research Triangle Park,  
North Carolina (919) 549-1400  
Camas, Washington (360) 817-5500

STEEL CONSTRUCTION SYSTEMS INC  
UL COORDINATOR  
11250 ASTRONAUT BLVD  
ORLANDO FL 32837

Your most recent Certification is shown below. Please review the text and contact the Conformity Assessment Services staff member who handled your project if revisions are required. For instructions on placing an order for this information in a 3 x 5-inch format, you may refer to the enclosed order form for UL Card Service.

### Design No. L565 File #R20982

Unrestrained Assembly Rating - 1 Hr  
Unrestrained Beam Rating - 1 Hr



- 1. Structural Steel Members\*** - Pre-fabricated light gauge steel truss system consisting of cold-formed, galvanized steel chord and web sections. Trusses fabricated in various sizes, depths, and from various steel thickness. Trusses spaced a max of 48 in. OC.  
**AEGIS METAL FRAMING LLC** - Ultra-Span, Pre-fabricated Light Gauge Steel Truss System.  
**ALLIED STUDCO** - Amkey System, Pre-fabricated Light Gauge Steel Truss System.  
**DALE/INCOR** - Versa Truss, Pre-fabricated Light Gauge Steel Truss System  
**HEXAPORT INTERNATIONAL LTD** - Strong stud, Pre-fabricated Light Gauge Steel Truss System

Steel Construction Systems □  
11250 Astronaut Blvd. □  
Orlando, FL 32837 □  
Telephone (800) 548-8499 □  
Fax (407) 438-1667 □  
□

ITEC STEEL INC - Type Gus Truss System  
**STEEL CONSTRUCTION SYSTEMS INC**  
TRUSSTEEL, DIV OF  
ALPINE ENGINEERED PRODUCTS INC - TrusSteel

2. **Bridging** - (Not Shown) - Location of lateral bracing for truss chord and web sections to be specified on truss engineering.
3. **Flooring System** - The finish flooring may consist of any one of the following systems:

**System No. 1**

**Finish Flooring** - Nom 1 by 4 in. T&G laid perpendicular to trusses; or 15/32 in. thick wood structural panels, min grade "Underlayment" or "Single Floor". Long dimensions of panel (strength axis) or face grain of plywood to be perpendicular to trusses with joints staggered. Vapor Barrier (Optional) - Commercial asphalt saturated felt, 0.030 in. thick. Subflooring 23/32 in. thick wood structural panels, min grade "Underlayment" or "Single Floor". Installed perpendicular to trusses with end joints staggered 4 ft. Plywood or nonveneer panels, mechanically fastened to trusses 12 in. OC in conjunction with construction adhesive.

**System No. 2**

**Finish Flooring** - Floor Topping Mixture\* 6.8 gal of water to 80 lbs of floor topping mixture to 1.9 cu ft of sand. Compressive strength to be 1100 psi min. Thickness to be 3/4 in. min.

**HACKER INDUSTRIES INC** - Firm-Fill, Firm-Fill 2010, Firm-Fill High Strength, Gyp-Span Radiant

**Floor Mat Material** - (Optional) - Nom 1/4 in. thick, adhered to subfloor with Hacker Floor Primer. Primer to be applied to the surface of the mat prior to the placement of a min 1-1/2 in. of floor topping mixture.

**HACKER INDUSTRIES INC** - Sound-Mat

**Subflooring** - 23/32 in thick wood structural panels, min grade "Underlayment" or "Single Floor". Installed perpendicular to trusses with end joints staggered 4 ft. Plywood or panels, mechanically fastened to trusses 12 in. OC in conjunction with construction adhesive.

**System No. 3**

**Finish Floor Mineral and Fiber board\*** - sizes ranging from 3 ft by 4 ft to 8 ft by 12 ft, by min 1/2 in. thick. All joints to be staggered a min of 12 in. OC with adjacent sub-floor joints.

**HOMASOTE CO** - Type 440-32

**Mineral and Fiber Board** - Subflooring 23/32 in. thick wood structural panels, min grade "Underlayment" or "Single Floor". Installed perpendicular to trusses with end joints staggered 4 ft. Plywood or panels, mechanically fastened to trusses 12 in. OC in conjunction with construction adhesive.

4. **Furring Channels** - Resilient channels formed of 25 MSG galv steel, installed perpendicular to the steel trusses (Item 1), spaced a max of 16 in. OC when no insulation (Item 6 or 6A) is fitted in the concealed space, or a max of 12 in. OC when insulation (Item 6 or 6A) is fitted in the concealed space, draped over the resilient channel/gypsum wallboard ceiling membrane. Two courses of resilient channel positioned 6 in. OC at wallboard butt-joints (3 in. from each end of wallboard). Channels oriented opposite at wallboard butt-joints. Channel splices overlapped 4 in. beneath steel trusses. Channels secured to each truss with type S12 by 1/2 in. long screws.
- 4A. **Furring Channels** - as an alternate to Item 4, resilient channels, double legged formed of 25 MSG galv steel, 2-7/8 in. wide by 1/2 in. deep, installed perpendicular to the trusses (Item 1) spaced max 16 in. OC when no insulation (Item 6 or 6A) is fitted in the concealed space, or a max of 12 in. OC when insulation (Item 6 or 6A) is fitted in the concealed space, draped over the resilient channel/gypsum wallboard ceiling membrane. Two courses of resilient channel positioned 6 in. OC at wallboard butt-joints (3 in. from each end of wallboard). Channel splices overlapped 4 in. beneath steel trusses. Channels secured to each truss with Type S12 by 1/2 in. long screws or with No. 18 SWG galv steel wire double strand saddle ties. Channels tied together with double strand of No. 18 SWG galv steel wire at each end of overlap.
5. **Gypsum Board\*** - One layer of nom 5/8 in. thick by 48 in. wide boards, installed with long dimension parallel to trusses. Attached to the resilient channels using 1-1/8 in. long Type S bugle-head screws. Screws spaced a max of 12 in. OC along butted end-joints and in the field.

**NATIONAL GYPSUM CO** - Types FSW-C or FSW-G

6. **Batts and Blankets\*** - Optional - Mineral wool or glass fiber insulation bearing the UL Classification Marking for Surface Burning Characteristics, having a flame spread value of 25 or less and a smoke value of 50 or less. Insulation fitted in the concealed space, draped over the resilient channel/gypsum wallboard ceiling membrane.
- 6A. **Loose Fill Material\*** - As an alternate to Item 6 - Any thickness of loose fill material bearing the UL Classification Marking for Surface to concealed space, draped over the resilient channel/gypsum wallboard ceiling membrane.
7. **Finishing System** - (Not Shown) - Vinyl, dry or premixed joint compound, applied in two coats to joints and screw-heads; paper tape, 2 in wide, embedded in first layer of compound over all joints. As an alternate, nom 3/32 in. thick veneer plaster may be applied to the entire surface of gypsum wallboard.
8. **Steel Beam Optional** - (Not Shown) - W8x35 min size, used to support structural steel members (Item 1) at ends.

\*Bearing the UL Classification Mark

469858001

A not-for-profit organization dedicated to public safety and committed to quality service

BXUV/L565  
November 13, 2002

Steel Construction Systems□  
11250 Astronaut Blvd.□  
Orlando, FL 32837□  
Telephone (800) 548-8499□  
Fax (407) 438-1667□  
□